



Seoul Hiking Tourism Center(Bukhansan Mountain)

Seoul is a city where the charm of the city itself and nature blend well together. You can enjoy spectacular natural landscapes from the center of Seoul. The Seoul Hiking Tourism Center is located 5 minutes on foot from Bukhansan Ui Station. The center provides various services for hiking tourists.

*Hours of operation: 9 am – 6 pm

(Closed: Mondays, on Lunar New Year's Day, on the day of Chuseok)



What we provide in Seoul Hiking Tourism Center



Hiking Gear Rental

Hiking gear(Hiking boots, hiking attire, etc.) rental service is available to those who visit the Seoul Hiking Tourism Center.

*Advance reservation:
www.seoulhiking.or.kr



Tourist Information

We provide tourist information in three different languages(English, Chinese and Japanese). You can get detailed information from maps, guidebooks, and other tourism promotional materials.



Lounge and Photo Zone area

Enjoy your time at the lounge and take a rest before & after exploring the Bukhansan area. Take some pictures and leave them as a beautiful memory of your Seoul Hiking experience.



Other Amenities

Changing rooms and storage lockers are available for your convenience. You can keep your body clean after sweaty hiking by using our shower facilities.

*Bring personal toiletries
(socks, towels, underwear, etc)



How to use the Seoul Hiking Tourism Center



SEOUL HIKING
TOURISM CENTER
서울도심등산관광센터



Homepage



Hiking Gear
Reservation

sto SEOUL
TOURISM
ORGANIZATION

SEOUL HIKING
TOURISM CENTER
서울도심등산관광센터

Seoul Hiking Tourism Center Guide



www.seoulhiking.or.kr

5F, 52, Samyang-ro 173-gil, Gangbuk-gu, Seoul, 01002
Center Phone Number: 1533-2608

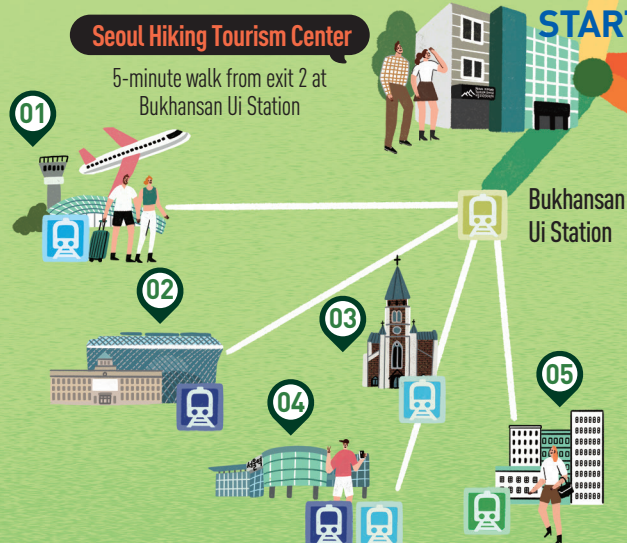
Directions to the Seoul Hiking Tourism Center

- 01 From Incheon International Airport**
 - ▶ Use the Airport Railroad → transfer at Seoul Station to Line 4 → Women's University Station to Ui-LRT → get off at Bukhansan Ui Station
 - ▶ Use the Airport Railroad → transfer at Gongdoek Station to Line 6 → transfer at Bomun Station to Ui-LRT → get off at Bukhansan Ui Station
- 02 From City Hall Subway Station**
 - ▶ Board subway Line 1 → transfer at Sinseol-dong Station to Ui-LR → get off at Bukhansan Ui Station
- 03 From Myeong-dong Subway Station**
 - ▶ Board subway Line 4 → transfer at Sungshin Women's University Station to Ui-LR → get off at Bukhansan Ui Station
- 04 From Seoul Subway Station**
 - ▶ Board subway Line 1 → transfer at Sinseol-dong Station to Ui-LRT → get off at Bukhansan Ui Station
 - ▶ Board subway Line 4 → transfer at Sungshin Women's University Station to Ui-LRT → get off at Bukhansan Ui Station
- 05 From Gangnam Subway Station**
 - ▶ Board subway Line 2 → transfer at subway Line 2 Seongsu Station in the direction of Sinseol-dong → transfer to Ui-LRT at Sinseol-dong Station → get off at Bukhansan Ui Station

Seoul Hiking Tourism Center

5-minute walk from exit 2 at Bukhansan Ui Station

START



Three most common Hiking Trails in Bukhansan Mountain



Trail A (Difficulty Level: Beginner / Sogwicheon Trail / 3.5km / Est. 100min)

Sogwicheon Valley resembles a cow's ear and is easily accessible. The trail slopes gently through the valley and you can enjoy a cool breeze and the beautiful forest. Beginners would find it a very easy walk.

Trail B (Difficulty Level: Intermediate / Youngbong Peak Trail / 4.3km / Est. 110min)

On this moderately challenging trail, you can experience the breathtaking landscape, a fine panorama of the Seoul City, from the top of Youngbong Peak.

Trail C (Difficulty Level: Advanced/Expert / Baegundae Trail / 4.1km / Est. 130min)

This is the shortest route to the Baegundae Peak, the highest peak of Seoul and the main peak of Bukhansan. You can enjoy a view of the Seoul skyline even higher than Youngbong Peak. You have to hold onto a rope and watch your step on the rock cliff on the path from Baegunbongammun to the Baegundae peak. Don't forget to wear sturdy hiking boots!